

**GENERAL NOTES**

- Licensed activities that take place anywhere within the red line.
- Any detail not required by the regulations is indicative only and may change without notice.
- The locations of fire safety equipment are indicative only and may change on advice from the fire service or following a fire risk assessment.

**KEY:**

- ⊕ EMERGENCY LIGHT COMBINED FITTING- ALL NEW
- ★ FLASHING BEACON
- S/H AREA TO BE COVERED BY A SMOKE / HEAT DETECTOR (LOCATION TO BE CONFIRMED BY ALARM CONSULTANT)
- CALL POINT
- AP ALARM PANEL
- FD30S 30 MINUTE INTEGRITY/30 MINUTE INSULATION FIRE DOOR WITH SMOKE SEALS AND FITTED WITH A SELF CLOSING DEVICE.
- ILLUMINATED FIRE EXIT SIGN
- ILLUMINATED SIGN INDICATING FIRE EXIT
- FIRE EXIT WITH PUSH BAR/PAD OPENING WITH SIGN

**MEANS OF ESCAPE**  
 Fire doors to be half hour fire resisting and self closing. Doors to satisfy BS476 Part 22: 1987 and be FD30/30 standard. Doors protecting means of escape should be fitted with intumescent strips and cold smoke seals.

**FIRE ALARM**  
 To integrate with provided building system. Symbols on plan indicate rooms to be covered, and actual location of detector heads are to be advised by a specialist fire alarm consultant.

**FIRE FIGHTING EQUIPMENT**  
 All fire fighting equipment to be set so that the carry handles are located 1.5m above floor level.

All equipment to be subject to annual testing by a competent person.

**EMERGENCY LIGHTING**  
 Premises to be covered with emergency lighting to standard set out in BS 5266: Part 1:2002. The code of practice for the emergency lighting of premises other than cinemas.

All exits to be indicated by the use of maintained illuminated exit signs. All other areas to be illuminated by general emergency lighting.

**CCTV**  
 Cctv locations to be agreed with the crime prevention team.

**FIRE CAPACITY :**  
 FE 1 (Front Door) Dimension 1500 Capacity 300  
 FE 2 Rear Door Dimension 1100 Capacity 200  
 FE 3 Side Door Dimension 1050 Capacity 200  
 FE 4 Upper Front Door Dimension 1050 \* 2 Capacity 400

**AREA CALCULATION**  
 Front of House 245 sqm Seating 87  
 Front of House 99 sqm Seating 28  
 Front of House Bar: 13 sqm Seating 16  
 Front of House 23 sqm Seating 18

Total area 340 sqm @ 0.5 680  
 Total seating 149  
 Max Total Capacity = 700

SCALE BAR IN METERS

PROJECT TITLE: **PLAY HOUSE - Epping**

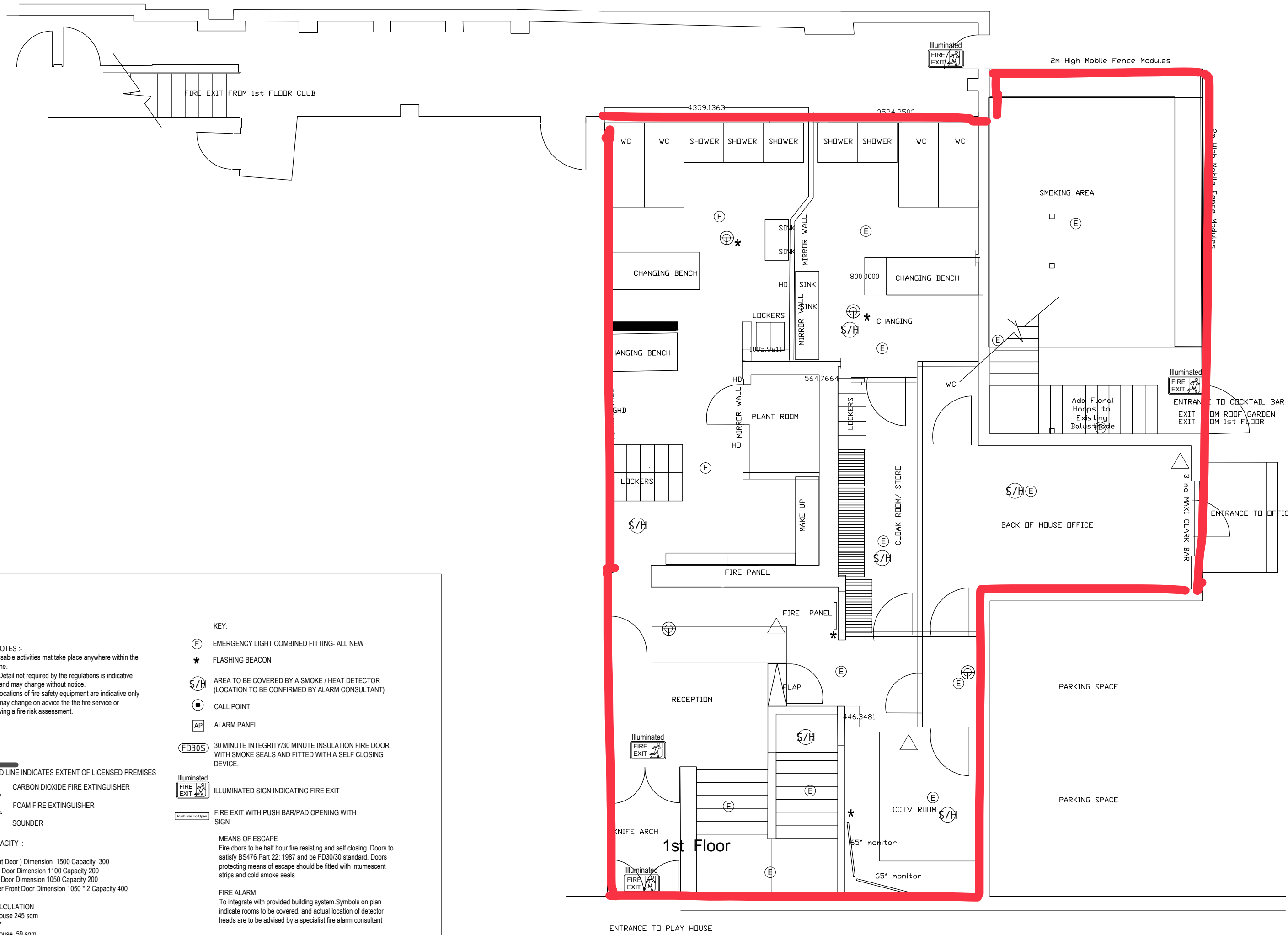
DRAWING TITLE: **COVID SET UP Plan** DRAWING NUMBER: **1369 -01**

CLIENT: **6 Chaps Ltd** DRAWN BY: **NM**

1:50 @ A1 DATE: **June 20** APPROVED BY:

**DISCLAIMER:**  
 THIS DRAWING REMAINS THE PROPERTY OF GMP DESIGN ASSOCIATES. COPYRIGHT IS RESERVED BY THEM AND THE DRAWING IS RELEASED ON THE CONDITION THAT IT IS NOT COPIED BY ANY MEANS MECHANICAL OR ELECTRONIC, EITHER WHOLE OR IN PART WITHOUT THE PRIOR PERMISSION IN WRITING OF GMP DESIGN ASSOCIATES. ALL CRITICAL DIMENSIONS ARE TO BE CHECKED. DO NOT SCALE DRAWING. THIS DRAWING IS DESIGN INTENT. ONLY THE MAIN CONTRACTOR IS TO ENFORCE ALL DIMENSIONS. BE APPROVED BY STRUCTURAL ENGINEER WHERE NECESSARY. SETTING OUT DIMENSIONS TO BE APPROVED BY GMP. ALL DIMENSIONS ARE TO BE CHECKED.

1st Floor Towers Point  
 Towers Business Park  
 Rugeley  
 Staffordshire  
 WS15 1UZ  
 Tel: (+44) 01889 576358  
 Fax: (+44) 01889 580069



- GENERAL NOTES -**
- Licensable activities must take place anywhere within the red line.
  - Any Detail not required by the regulations is indicative only and may change without notice.
  - The locations of fire safety equipment are indicative only and may change on advice from the fire service or following a fire risk assessment.

- RED LINE INDICATES EXTENT OF LICENSED PREMISES**
- CARBON DIOXIDE FIRE EXTINGUISHER
  - FOAM FIRE EXTINGUISHER
  - SOUNDER

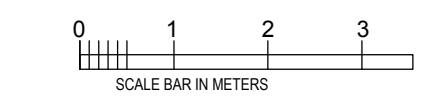
**FIRE CAPACITY :**

- FE 1 (Front Door) Dimension 1500 Capacity 300
- FE 2 Rear Door Dimension 1100 Capacity 200
- FE 3 Side Door Dimension 1050 Capacity 200
- FE 4 Upper Front Door Dimension 1050 \* 2 Capacity 400

**AREA CALCULATION**

- Front of House 245 sqm Seating 87
- Front of House 59 sqm Seating 28
- Front of House Balc 13 sqm Seating 15
- Front of House 23 sqm Seating 18

Total area 340 sqm @ 0.5 680  
 Total seating 149  
 Max Total Capacity = 700



**Ground Floor**

- KEY:**
- EMERGENCY LIGHT COMBINED FITTING- ALL NEW
  - FLASHING BEACON
  - AREA TO BE COVERED BY A SMOKE / HEAT DETECTOR (LOCATION TO BE CONFIRMED BY ALARM CONSULTANT)
  - CALL POINT
  - ALARM PANEL
  - 30 MINUTE INTEGRITY/30 MINUTE INSULATION FIRE DOOR WITH SMOKE SEALS AND FITTED WITH A SELF CLOSING DEVICE.
  - ILLUMINATED SIGN INDICATING FIRE EXIT
  - FIRE EXIT WITH PUSH BAR/PAD OPENING WITH SIGN

**MEANS OF ESCAPE**  
 Fire doors to be half hour fire resisting and self closing. Doors to satisfy BS476 Part 22: 1987 and be FD30/30 standard. Doors protecting means of escape should be fitted with intumescent strips and cold smoke seals

**FIRE ALARM**  
 To integrate with provided building system. Symbols on plan indicate rooms to be covered, and actual location of detector heads are to be advised by a specialist fire alarm consultant

**FIRE FIGHTING EQUIPMENT**  
 All fire fighting equipment to be set so that the carry handles are located 1.5m above floor level.

All equipment to be subject to annual testing by a competent person

**EMERGENCY LIGHTING**  
 Premises to be covered with emergency lighting to standard set out in BS 5266: Part 1:2002 The code of practice for the emergency lighting of premises other than cinemas.

All exits to be indicated by the use of maintained illuminated exit signs. All other areas to be illuminated by general emergency lighting

**CCTV**  
 Cctv locations to be agreed with the crime prevention team

PROJECT TITLE: **PLAY HOUSE - Epping**

DRAWING TITLE: **Proposed Plan - Rev A**

DRAWING NUMBER: **1369 - 02**

CLIENT: **6 Chaps Ltd**

DRAWN BY: **NM**

1:50 @ A1

DATE: **MAY 20**

**DISCLAIMER:**  
 THIS DRAWING REMAINS THE PROPERTY OF GMP DESIGN ASSOCIATES. COPYRIGHT IS RESERVED BY THE DRAWING ORIGINATOR. NO PART OF THIS DRAWING IS TO BE REPRODUCED OR TRANSMITTED IN ANY FORM OR BY ANY MEANS, ELECTRONIC OR MECHANICAL, WITHOUT THE PRIOR PERMISSION IN WRITING OF GMP DESIGN ASSOCIATES. ALL CRITICAL DIMENSIONS ARE TO BE CHECKED ON SITE. ONLY THE MAIN CONTRACTOR IS TO ENFORCE ALL REGULATIONS AND CODES OF PRACTICE. THIS DRAWING IS FOR INFORMATION ONLY. THE MAIN CONTRACTOR IS TO BE APPROVED BY STRUCTURAL ENGINEER BEFORE PROCEEDING WITH THE WORK. APPROVED BY GMP. ALL DIMENSIONS ARE TO BE SITE CHECKED.

1st Floor Towers Point  
 Towers Business Park  
 Rugeley  
 Staffordshire  
 WS15 1LZ  
 Tel: (+44) 01889 576358  
 Fax: (+44) 01889 580069